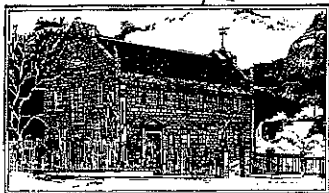


TO Ron

7832877



Finch Paper LLC
Established 1865



1 GLEN STREET, GLENS FALLS, NY 12801-2167 · TEL: (518) 793-2541 · FAX: (518) 793-7354
WWW.FINCHPAPER.COM

September 11, 2007

Dear Recreational Lease Club President:

With the fall work season on the near horizon and many club "work days" coming up I would like to bring to your attention a few compliance issues pertaining to your lease with Adirondack Woodlands LLC/The Nature Conservancy.

1). No firewood should be moved onto or removed from Adirondack Woodlands LLC/TNC lands. As described in the enclosed flyers, three recently introduced tree killing insects: the Emerald Ash Borer, Asian Longhorned Beetle and the Sirex Woodwasp are wood infesting species that can be transported and spread by firewood.

All firewood used on Adirondack Woodlands LLC/TNC lands is to be cut and used onsite. Note prior to cutting any standing live or dead tree on lease land Finch Paper LLC needs to be notified and a forester needs to inspect and mark the tress to be cut.

2). All road work preformed by lessees needs to be according to New York State Forestry Best Management Practices for water Quality BMP Field Guide. Prior to any soil disturbance work being done by club members or contractors Finch Paper LLC needs to be notified.

I would also like to give you a "heads-up" on a feature article in the September/October issue of the Adirondack Explorer, titled "Deal of the Century". It includes a lot of speculation about potential public access and the future of Adirondack Woodlands LLC/TNC lands. While it may cause concern among your membership and possibly spark discussion at club meetings, please know that TNC and Finch Paper LLC staff will continue to provide you with informed updates about the lands you lease, just as we've done since the transition in ownership took place in June.

If you have further questions, please contact me at (518) 793-2541, extension 5353.

Sincerely,

Roger A. Dziengeski
Manager of Woodlands for
Adirondack Woodlands LLC and
The Nature Conservancy

Encl.